

EXAMINATION MUSIC THEORY



A 2014 - 2015

NAME: INSTRUMENT:



TOTAL POINTS: FINAL MARK:

question

1

points
(max 10):

SOLFEGGIO - INTERVALS

Listen to the intervals. Which interval do you hear?

Tick the box with the right answer, like this:

- a
- b
- c
- d
- e

- | | | | | |
|--------------------------------|---------------------------------|--------------------------------|---------------------------------|--------------------------------|
| prime <input type="checkbox"/> | second <input type="checkbox"/> | third <input type="checkbox"/> | fourth <input type="checkbox"/> | fifth <input type="checkbox"/> |
| prime <input type="checkbox"/> | second <input type="checkbox"/> | third <input type="checkbox"/> | fourth <input type="checkbox"/> | fifth <input type="checkbox"/> |
| prime <input type="checkbox"/> | second <input type="checkbox"/> | third <input type="checkbox"/> | fourth <input type="checkbox"/> | fifth <input type="checkbox"/> |
| prime <input type="checkbox"/> | second <input type="checkbox"/> | third <input type="checkbox"/> | fourth <input type="checkbox"/> | fifth <input type="checkbox"/> |
| prime <input type="checkbox"/> | second <input type="checkbox"/> | third <input type="checkbox"/> | fourth <input type="checkbox"/> | fifth <input type="checkbox"/> |

question

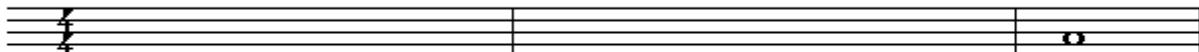
2

points
(max 10):

SOLFEGGIO - RHYTHMIC AND MELODIC DICTATION

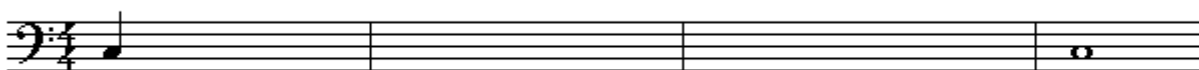
a

RHYTHMIC DICTATION: A rhythm is played in parts.
Write down the rhythm with notes on the staff below.



b

MELODIC DICTATION: A melody is played in parts.
Write down the melody with notes on the staff below.



question

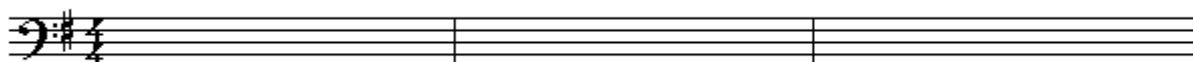
3

points
(max 10):

NOTES AND ACCIDENTALS/KEY SIGNATURE

Write down the requested notes on the staff below.

Be aware of the bar lines and take care
that the notes are clearly readable.



A F E C Bb A E F F# G

question

4

points
(max 10):

NOTE DURATION

Write down the number of beats under the notes of the example.
Mind the time signature!





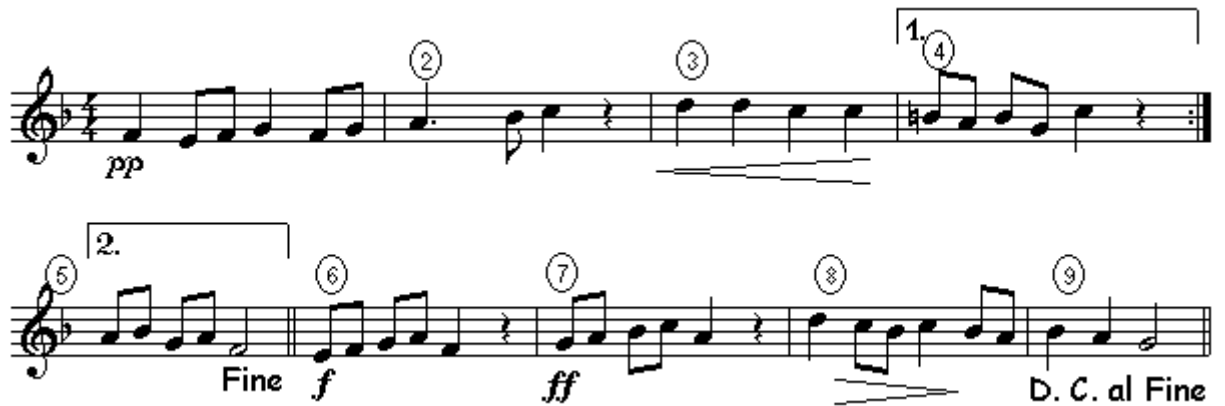
question

5

points
(max 10):

MUSICAL MARKS

In the following example you see different marks in each bar. Study the example and answer the questions.



- a What do you have to do in bar 1 _____
- b What do you have to do in bar 3 _____
- c And at the end of bar 4 _____
- d What do you have to do in bar 6 _____
- e What do you have to do in bar 7 _____
- f What do you have to do in bar 8 _____
- g And at the end of bar 9 _____
- h What does the hook with number 1. mean in bar 4 _____

i What does D.C. in bar 9 mean? _____

j In which bar does the song really finish? _____



question

6

points
(max 10):

ITALIAN WORDS AND TEMPO MARKS

In the example below you see marks and words about the tempo of a musical piece. Study the example and answer the questions.

Allegro ♩ = 125

riten

a tempo

adagio

- a What does Allegro mean?
- b What does riten. mean in bar 3
- c What does the sign in bar 4 mean?
- d What do you have to do in bar 5?
- e And in bar 7?



question

7

points
(max 10):

SLURS AND DOTS

In the example you see different slurs and dots. Study them and write down what they mean after the question.

- a What does the slur mean in the beginning of bar 1?
- b And the one between bar 1 and 2?
- c What does the dot mean in bar 2?
- d And the dots in bar 3?
- e And the dots in bar 4?



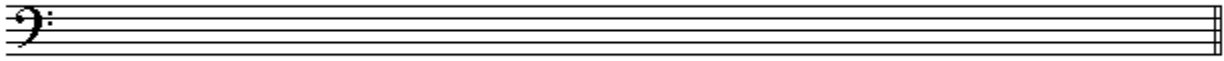
question

8

points
(max 10):

INTERVALS

Write down the requested intervals on the staff.
Take the note c as the bottom note.



fourth

second

prime

third

fifth

question

9

points
(max 10):

TIME SIGNATURE/METER

Study the example below.
Carry out the instructions
and answer the questions.



- a Write down the time signature at the beginning of the line
- b How many beats are there in each bar? _____
- c How long is the quarter note in this piece? _____
- d How long is the eighth note? _____
- e And how long is the dotted quarter note? _____

question

10

points
(max 10):

THE NATURAL SCALE

Carry out the instructions of this question and mind:
WRITE CLEARLY AND SPACIOUSLY. Take care you can read all the notes.
Therefore use the whole staff.

- a First write down the clef you use to read at the beginning of the empty staff.
- b Then write down the notes of the natural scale.
- c Write down the names of the notes underneath.
- d Mark the distances between the notes with slurs.
- e Mark the note we call the third with an arrow.

