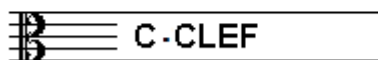


# EXAMINATION MUSIC THEORY



## D 2015 - 2016

NAME: ..... INSTRUMENT: .....



TOTAL POINTS: ..... FINAL MARK: .....

question

1

points  
(max 10): .....

### SOLFEGGIO - HEARING INTERVALS

Listen to the intervals. Which do you hear?

Fill in first a through e, then f through j.

Don't forget to add minor, major, perfect, diminished and augmented.

a

.....

f

.....

b

.....

g

.....

c

.....

h

.....

d

.....

i

.....

e

.....

j

.....

question

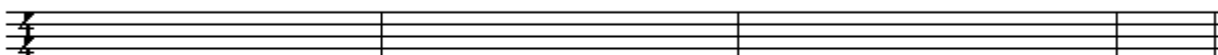
2

points  
(max 10): .....

### SOLFEGGIO - RHYTHMIC AND MELODIC DICTATION

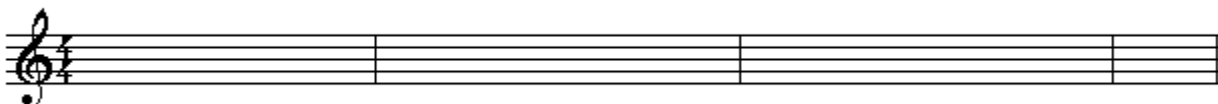
a

**RHYTHMIC DICTATION:** A rhythm is played in parts.  
Write down the rhythm with notes on the staff below.



b

**MELODIC DICTATION:** A melody is played in parts.  
Write down the melody with notes on the staff below.



question

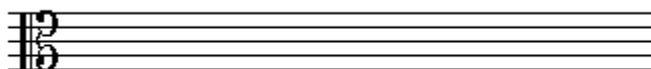
3

points  
(max 10): .....

### INTERVALS

Name the intervals below

and write down the requested intervals on the empty staff.



Augm. 4th on f# // minor 7th on Eb // minor 3d on Bb



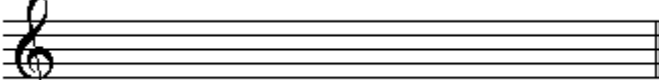
question

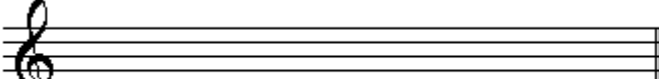
points  
(max 10):

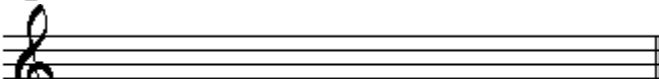
7

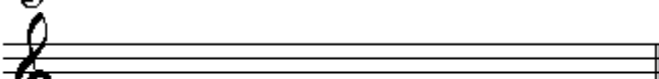
### TIME SIGNATURE

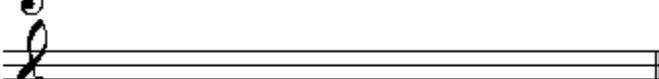
Write down the requested time signatures on the staves below.  
Give a rhythmic example of 1 or 2 bars, write down the time signature and mark the accents above the right notes.

a  seven eight meter

b  three two meter

c  nine eight meter

d  twelve eight meter

e  nine sixteenth (odd)

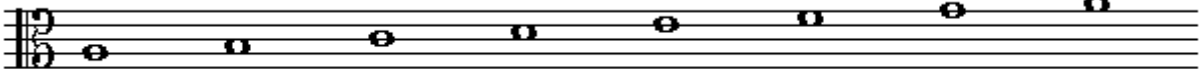
question

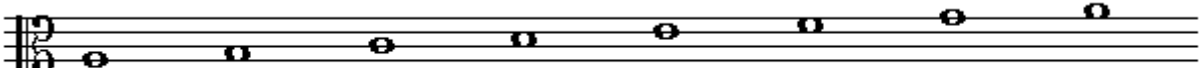
points  
(max 10):

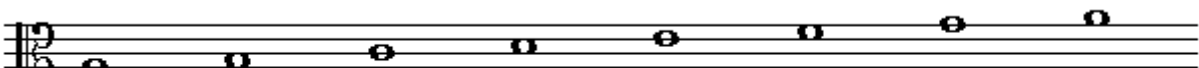
8

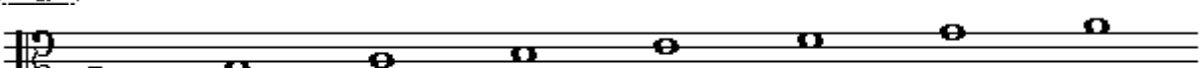
### SCALES

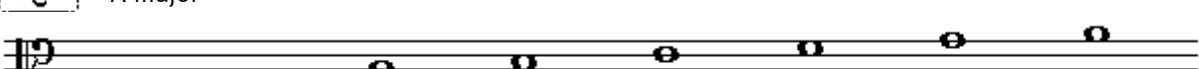
Underneath you see the same succession of notes 5 times.  
Adapt each series though accidentals to get the requested scale.

a A-minor:  


b A-minor melodic (only ascending)  


c A-minor harmonic  


d Ab-major  


e A-major  


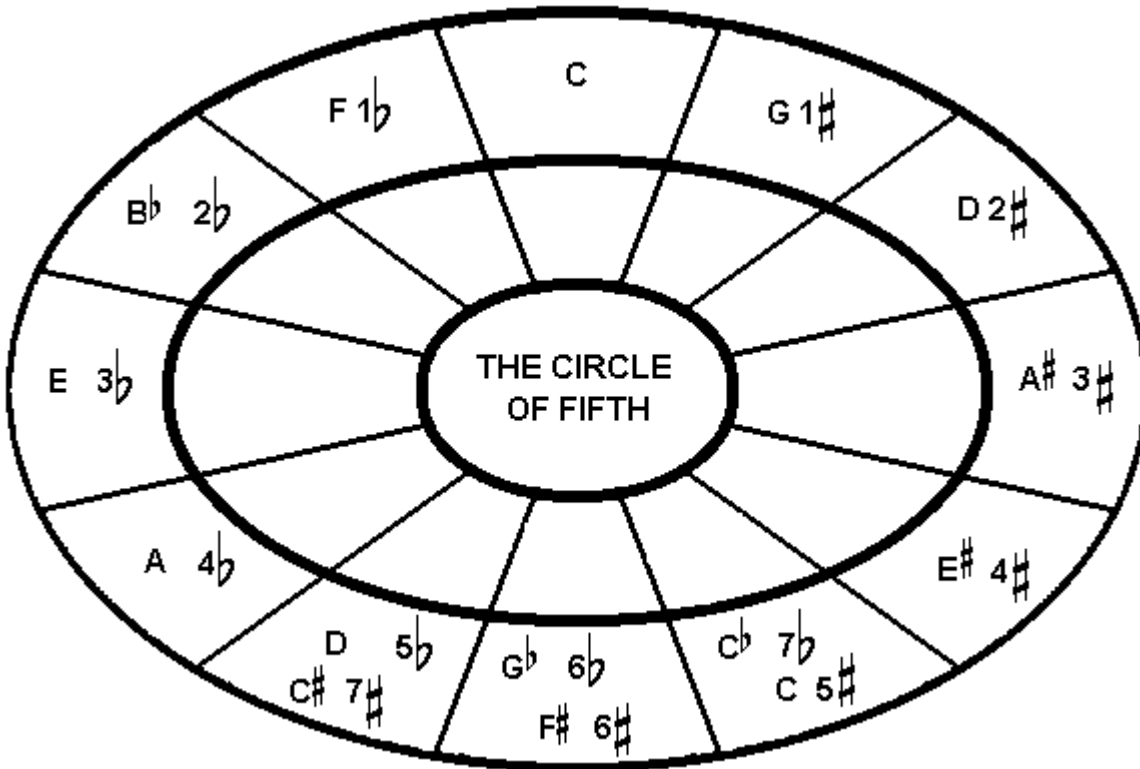
question

9

points  
(max 10):

### THE CIRCLE OF FIFTH

Underneath you see the circle of fifths with the major scales  
When you look carefully, you will find several mistakes.  
Write down the correct names and signs.



question

10

points  
(max 10):

### GENERAL UNDERSTANDING

The example underneath is a piece from the song Autumn Leaves, from the Real Book.

Study the example and answer the questions.

(Handwritten) **AUTUMN LEAVES** - JIMMY MERCE

- a What is the music style of this song? \_\_\_\_\_
- b Which chord has to be played in line 2, bar nr. 2? \_\_\_\_\_
- c Which chord do you have to play in line 3, bar 4? \_\_\_\_\_
- d A hand-written piece is a little bit difficult to read, but what is the meaning of the sign, in line 5, bar 4, between B and A#?  
\_\_\_\_\_
- e What could be the karakter of the song; happily, exciting ...? \_\_\_\_\_
- f Who is the composer of the song? \_\_\_\_\_