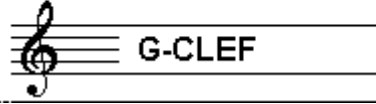


EXAMINATION MUSIC THEORY



D 2016 - 2017

NAME: INSTRUMENT:



TOTAL POINTS: FINAL MARK:

question

1

points
(max 10):

SOLFEGGIO - HEARING INTERVALS

Listen to the intervals. Which do you hear?

Fill in the complete names of the intervals.

Don't forget to add minor, major, perfect, diminished and augmented.

- a
- b
- c
- d
- e

.....

.....

.....

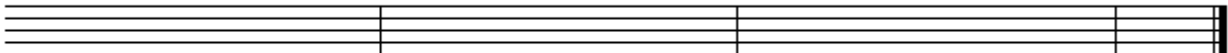
.....

.....

SOLFEGGIO - RHYTHMIC AND MELODIC DICTATION

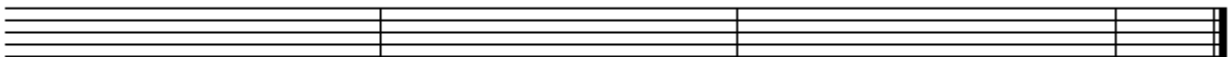
a

RHYTHMIC DICTATION: A rhythm is played in parts.
Write down the rhythm with notes on the staff below.



b

MELODIC DICTATION: A melody is played in parts.
Write down the melody with notes on the staff below.



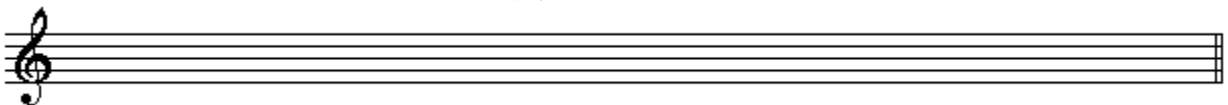
question

3

points
(max 10):

INTERVALS

Name the intervals below
and write down their complete names
on the empty staff.



major third on a^b // aug. fourth on $f^\#$ // minor third on a^b // major seventh on $c^\#$ // minor sixth on e^b

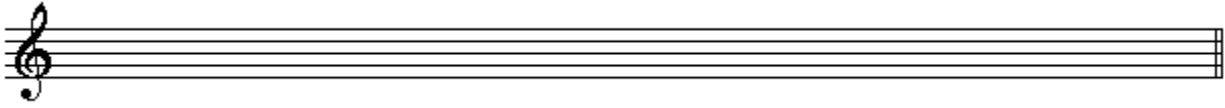
question

4

points
(max 10):

TRIADS

Name the triads below
and write down their complete names
on the empty staff.



verm. 3kl op c# // overm. 3kl op c# // grote 3kl op e // kleine 3kl op f# // verm. 3kl op bb



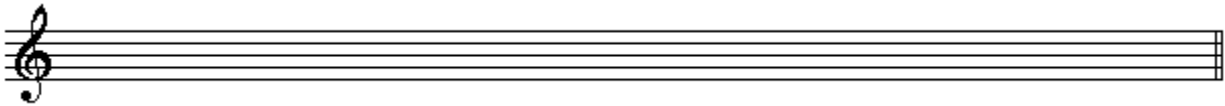
question

5

points
(max 10):

SEVENTH CHORDS

Name the seventh chords below
and write down their complete names
on the empty staff.



dom.7-akk op b // halfverm.7-akk op b // verm.7-akk op c# // klein 7-akk op f // groot 7-akk op f#



question

6

points
(max 10):

THEORY OF FORM

Show the form of a regular popsong in a schema.
Mention the names of the main parts and also the beginning part,
the end part and the part in the middle, used as a kind of "turning point"

Handwriting lines for the answer to the Theory of Form question.

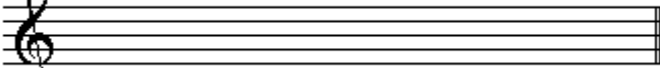

question

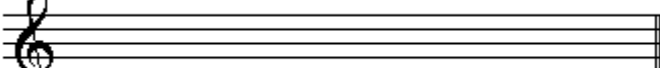

7

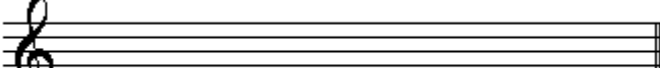

points
(max 10):

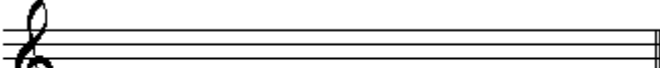

TIME SIGNATURE

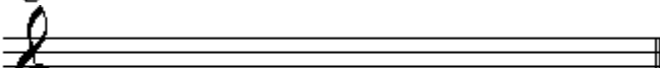

Write down the requested time signatures on the staves below.
Give a rhythmic example of 1 or 2 bars,
and mark the accents above the right notes.

a  

b  

c  

d  

e  irregular: 

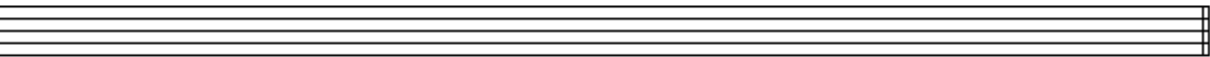
question

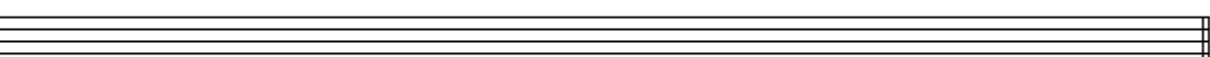
8

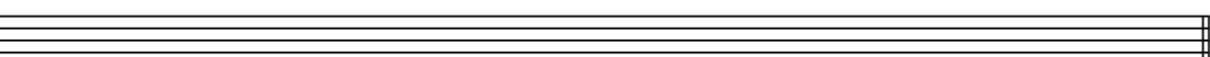
points
(max 10):

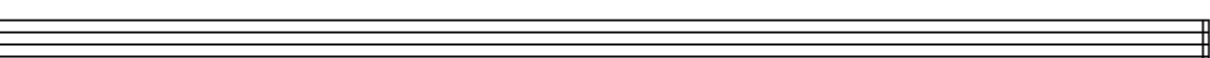
SCALES

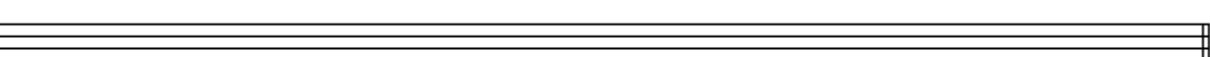
Write down the requested scales
on the empty staves below.
Don't forget the notation of the clefs, sharps and flats.

a C# minor 

b C-minor melodic (only ascending) 

c B major 

d Eb minor harmonic 

e F# major 

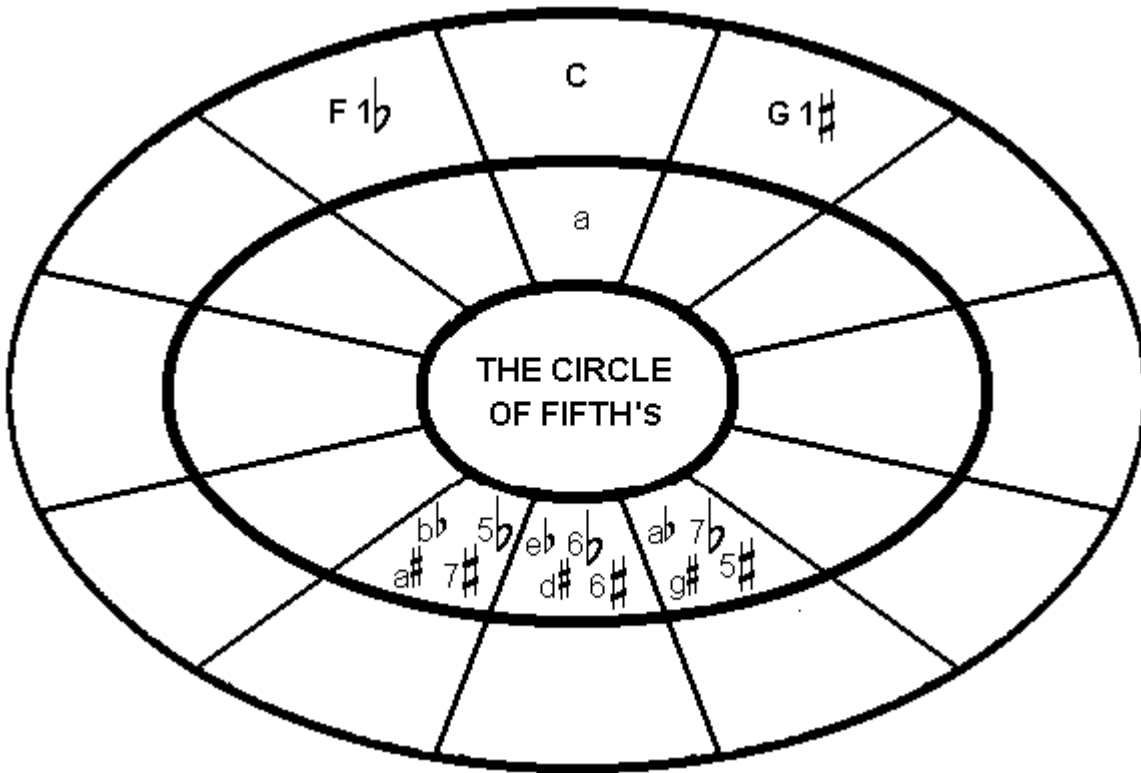
question

9

points
(max 10):

THE CIRCLE OF FIFTHS

In the example below you see the circle of fifths with a few scales
Fill in all the major scales on the right place.
You don't need to fill in the minor scales.



question

10

points
(max 10):

GENERAL UNDERSTANDING

The example below is the last page of the music piece "The Moldau",
the wellknow symphonic poem of the Tsjech composer Smetana.
Study the sheet music and answer the questions.

419 rall. [a tempo]

Picc.
Fl. 1 2
Ob. 1 2
Cl. (A) 1 2
Fg. 1 2

C
Cor. (E) 1 2 3 4
Tr. (E) 1 2
Tbn. 1 2
Tuba 3
Timp.

VI. I II
Vla.
Vc. div.
Cb.

- a) Which group of instruments has to play this piece? _____
- b) What is the key of this last part of the music piece? _____
- c) What do all instruments have to do in bar 23? _____
- d) What is the first note on this page, of the viola (Vla.)? _____
- e) What do all instruments have to do in bar 425? _____