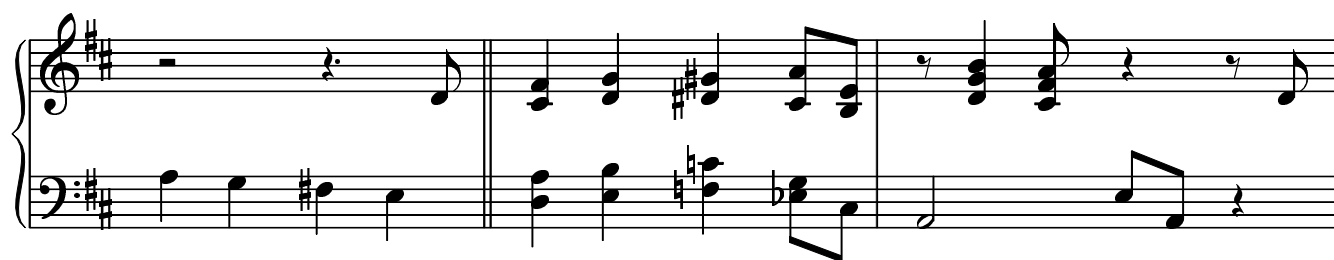
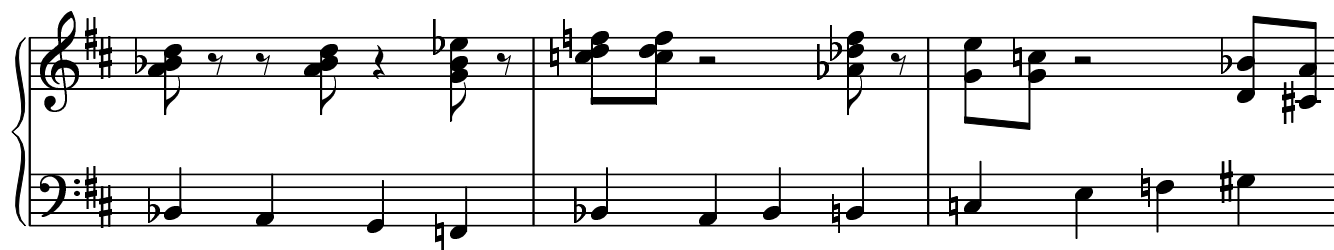
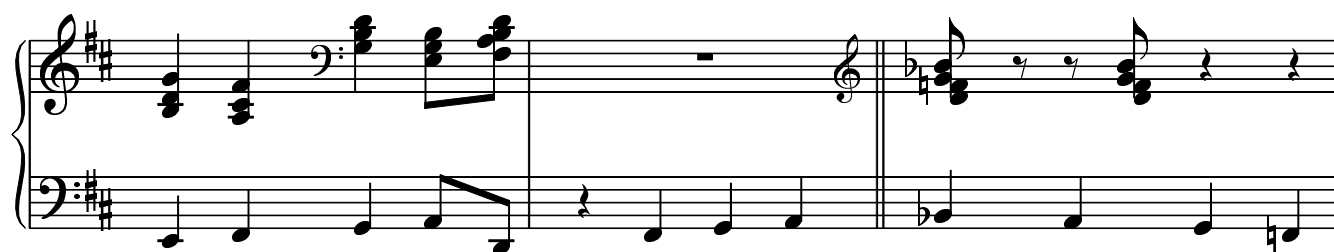
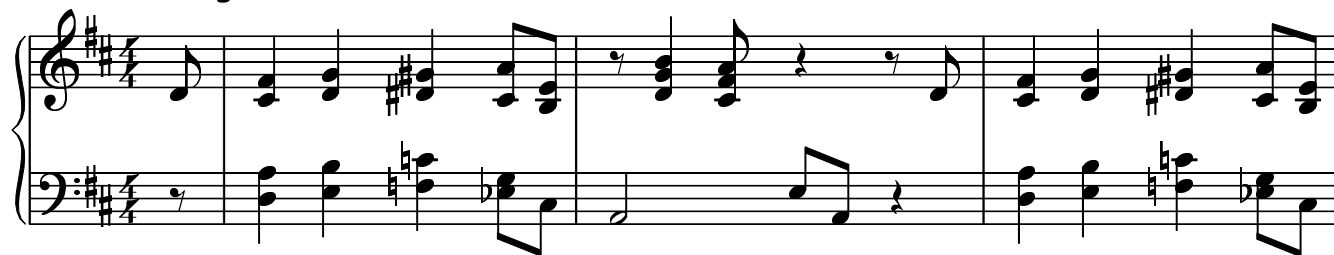
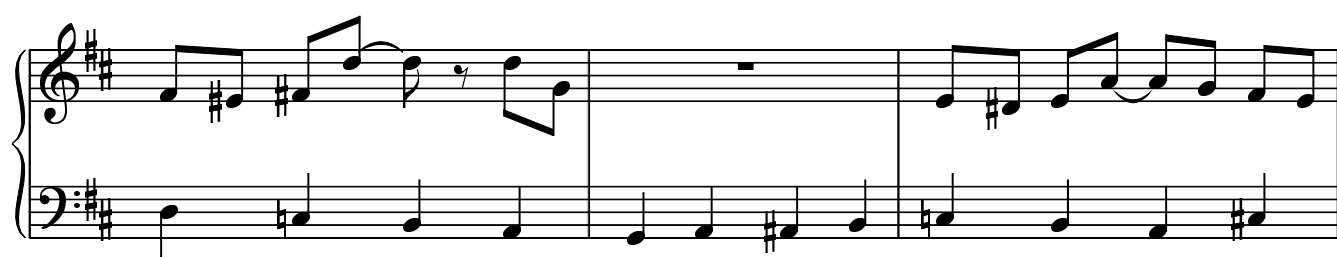
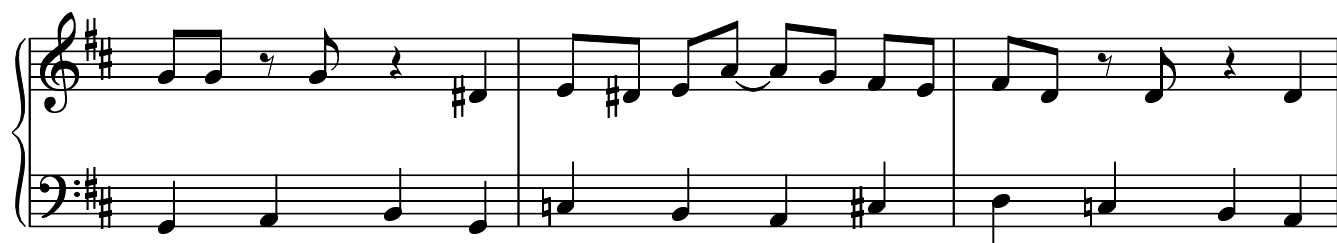
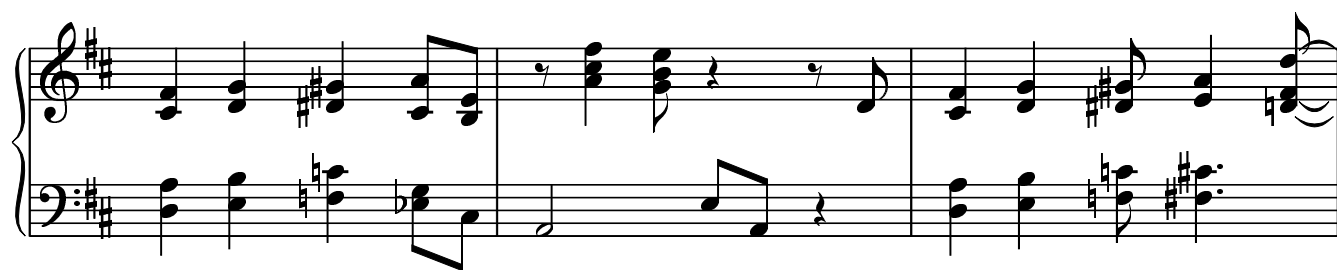


Playing Children

Swing ♩ = 130

Bert Doornbos





[illegible]

A musical score for the song 'The Rose Tree'. The score is written for piano (p) and features a treble and bass staff. The key signature is one sharp (F#), and the time signature is 4/4. The melody is in the treble staff, and the accompaniment is in the bass staff. The score consists of two systems, each with four measures. The first system shows the beginning of the piece, and the second system shows the continuation of the melody and accompaniment.

A musical score for the song 'The Rose Tree'. The score is written for piano (p) and features a treble and bass staff. The key signature is one sharp (F#), and the time signature is 4/4. The melody is in the treble staff, and the accompaniment is in the bass staff. The melody consists of a series of eighth and quarter notes, while the accompaniment consists of a steady eighth-note pattern. The score is divided into four measures, each containing a measure of melody and a measure of accompaniment.

A musical score for the song 'The Rose Tree'. It consists of two staves, a treble staff and a bass staff, both in the key of D major (indicated by two sharps: F# and C#). The time signature is 4/4. The melody is written in the treble staff, and the accompaniment is in the bass staff. The piece is divided into three measures by vertical bar lines. The first measure shows the initial chords and melody. The second measure continues the melody and accompaniment. The third measure concludes the short excerpt with a final chord and melodic phrase.

A musical score for the song 'The Rose Tree'. The score is written for a piano, with a treble and bass staff. The key signature is one sharp (F#), and the time signature is 4/4. The melody is in the treble staff, and the accompaniment is in the bass staff. The score consists of 16 measures, with a repeat sign at the beginning and a double bar line at the end. The melody is a simple, folk-like tune, and the accompaniment provides a steady, rhythmic foundation.

A musical score for the song 'The Rose Tree'. The score is written for piano (p) and features a treble and bass staff. The key signature is one sharp (F#), and the time signature is 4/4. The melody is primarily in the treble staff, while the bass staff provides a simple accompaniment. The score includes a key signature change from one sharp to two sharps (F# and C#) in the final measure, indicated by a double bar line and a key signature change symbol.